

Phuket's Only Resort-Based 18-Hole Golf Course

LAGUNA
PHUKET

Designed by Max Wexler and David Abell, Laguna Phuket Golf Course measures 6,654 yards from the back tees and 5,464 yards from the forward tees. The award-winning Golf Club features a wealth of tropical scenic lagoons and undulating fairways, set against a stunning backdrop of mountains and nearby sea. The golf course is integrated into the Laguna Phuket resort complex, which comprises the seven luxury hotel and villa properties of Banyan Tree Phuket,

Sheraton Grande Phuket, Laguna Beach Resort, Dusit Thani Laguna Resort, Laguna Holiday Club, Best Western Allamanda and Outrigger Laguna Phuket Resort and Villas. Laguna Phuket's facilities and activities include five spas, 30 restaurants and bars, boutique shopping, private charter and join-in luxury tours, daily activities at most hotels, canoeing and sailing, as well as the pristine beaches and azure waters of the Andaman Sea.





The Par 4, 12th hole

Laguna Phuket is easily accessed from any point of the island and is just 20 minutes from Phuket International Airport. Everything within the resort is accessed in minutes by complimentary shuttle buses and water ferries.

Host of the 2009 Singha Thailand Open and the 2010 Mercedes-Benz Masters Thailand, the 18-hole resort course has everything you need,

including a Thai-style functional clubhouse that overlooks the island ninth green. The clubhouse has a Pro Shop stocked with all leading golf brands, locker rooms with a full range of amenities, the Banyan Café offering outstanding cuisine and excellent service, and also three floodlit tennis courts, where instruction and ball girl service are available. Other

services include rental of equipment such as clubs, shoes, umbrellas and tennis rackets.

Andy Combe Golf - New training facility at Laguna Phuket

Andy Combe Golf offers a perfect location to learn and improve your game. With excellent facilities that include a covered area for sun and rain protection, a driving



The Par 5, 17th hole

range, putting greens, practice bunker and chipping areas, so you can work on both your long and short game.

The facility also features teaching and custom fit technologies using GASP Lab software and a Flightscope launch monitor. Combined with the many years of experience from the British PGA professionals – the perfect location and complete teaching facility.

Corporate Golf Days

What better way to wrap up your company's corporate retreat or annual conference than to hold a Corporate Golf Day at Laguna Phuket Golf Club? Let us play host while you raise your business profile and build relationships with key clients, customers and personnel. Your golf day should be entertaining and memorable, and held at a venue that will enhance your corporate image. We assist corporate groups of any size. Your golf day can have a lasting impact on your business, so successful organisation, planning and management of such an event is crucial. We offer a wide range of tailored services to help your day go smoothly and efficiently.



Laguna Phuket Golf Club

34 Moo 4, Srisoonthorn Road,
Cherngtalay, Thalang,
Phuket 83110, Thailand

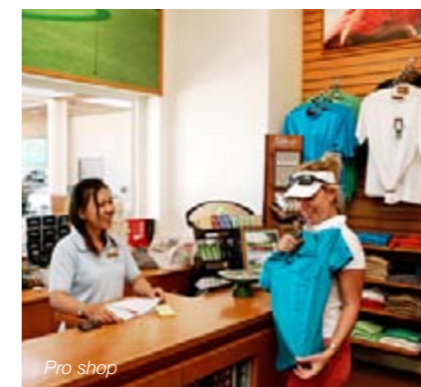
E-mail: golf@lagunaphuket.com
Web: www.lagunaphuketgolf.com
Tel: +66 (0)76 270 991/2
Fax: +66 (0)76 324 351



Clubhouse entrance



The Par 5 18th hole



Pro shop



Practice facility

ANDY COMBE
PGA COACH
LAGUNA PHUKET
GOLF CLUB

**Positive
Practice**



ANY AMOUNT OF TIME SPENT ON THE PRACTICE PUTTING GREEN WILL IMPROVE YOUR PUTTING STATISTICS. WHETHER YOU ARE A GOLFER THAT RELIES ON FEEL FOR YOUR PUTTING, OR REPEATED TECHNIQUE, THE DRILLS ON THE FOLLOWING PAGES WILL HELP YOU IMPROVE THE TWO POINTS THAT GOOD PUTTING IS BASED ON - LINE & PACE.



**ALIGNMENT -
Breaking Putts**

It is important to train your eyes to see a correct line. As I mentioned in my introduction, putting is all about line & pace. When working on breaking putts, I try to roll the ball at a speed that (if I miss) will finish around 18 inches past the hole. (The String - A very simple way to practice and trust the break in your putt).

For this (left - right putt) I have allowed for 12 inches of break. The key point here is to start the ball rolling down the line (under the string) towards the apex of the putt. The apex is the point you identify as to where the ball will break towards the hole.





THE EYE - Line Mirror

The Eye-Line mirror is a perfect putting tool that enables you to check that your eye-line is correct at set up.

If your eye-line is out of position in your set up, it is likely your shoulders and feet alignment will be off line also, which will badly manipulate the path of your intended putting stroke.

In my set-up, I want my eye-line to be just inside my ball - to - target line (The inside yellow line on the mirror).

The line on the mirror will now match my eye-line (parallel to the line I intend to roll the ball).



PURE Strike

Here I am using a practice device called the Putting Tutor - a device Phil Mickelson

sometimes uses before he plays to help pure his stroke.

The Putting Tutor has 2 marbles at its front edge, which tell you whether or not you make a "pure

strike" and started your putt on the correct line. If your ball dislodges one of the marbles, left or right - your ball started off-line. So here I just practice rolling my ball between the 2 marbles

- and watch the ball roll in the hole.

The Putting Tutor also features a guide line to help you aim your putt on the exact chosen line for your putt.



TARGET Practice

When working on my own putting - or coaching my students, I like to include a competitive and pressure aspect to putting practice. Using these plastic rings

(targets), I set goals that need to be completed. Example - I use 5 balls and give 10 points to hit the outer circle, 20 points for the inner circle and 30 points for holing

the putt. To complete your practice you will need to score 100 points with the 5 balls. This game is fun and also gives a competitive edge to your practice.

CHECKING PATH & Pendulum Motion

Here I have placed two golf clubs on the green for my intended/chosen target line & putting swing path. This will help groove my (Aim - Set-up & Putting Stroke) A good pendulum - motion for your putting stroke is created by these mentioned points. Your putter face will now have a better chance of moving back and through on the correct swing path.

Something for you to attempt when using with this putting drill



EXERCISE 1

Try and hole some putts looking down between the two club shafts without looking up.

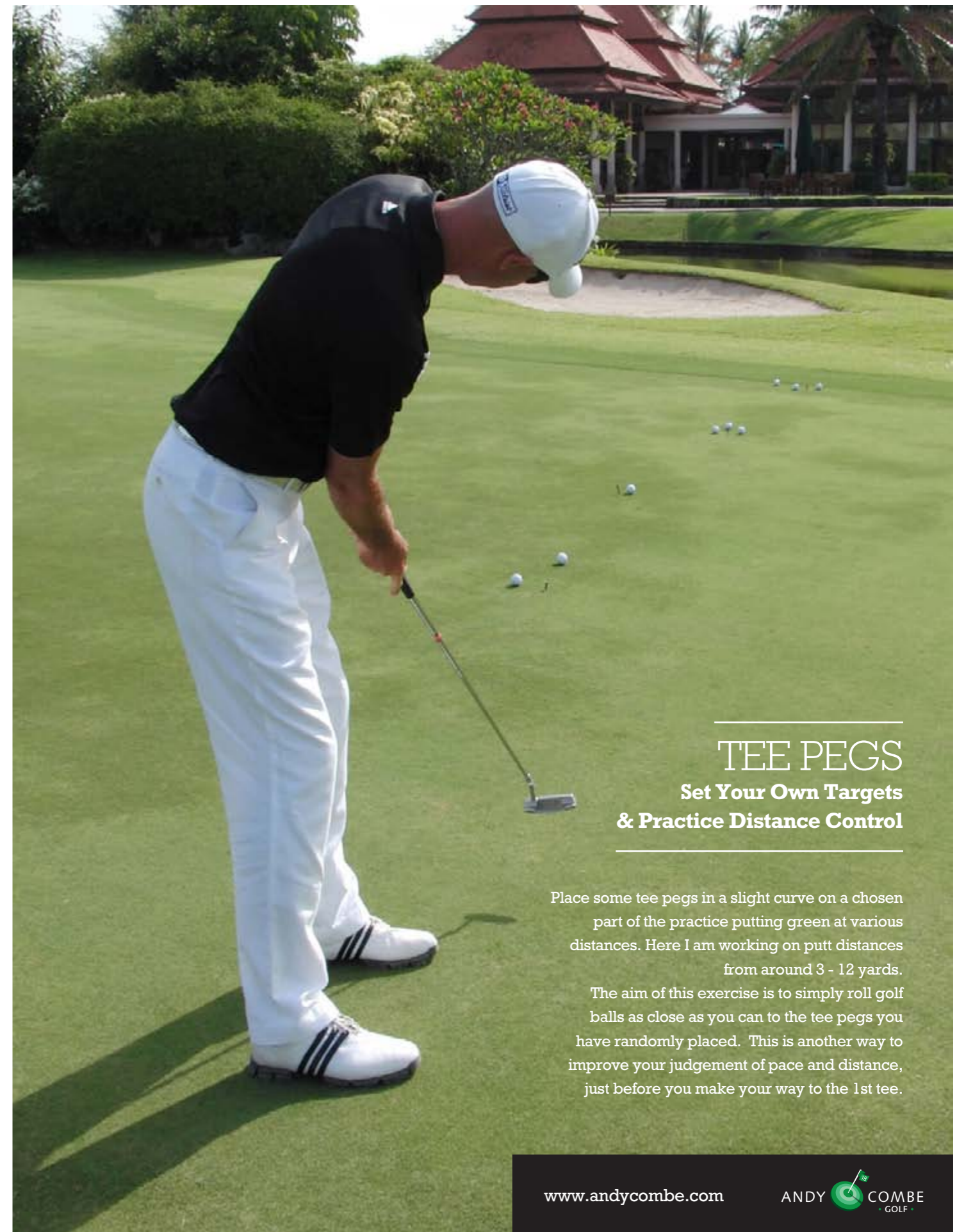
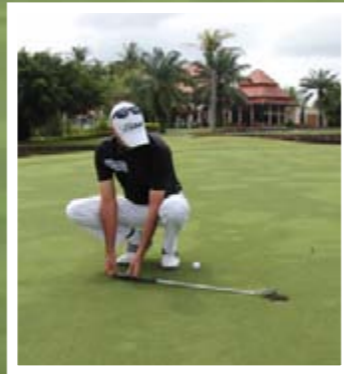
EXERCISE 2

Try and hole some putts with your eyes closed. For both exercises - just listen to the ball fall in the hole.

FULL CIRCLE Reading Short Putts

The following practice exercise is something I always try and do just before I make my way to the 1st Tee. On your practice putting green, set up golf balls at equal distances from the hole - sometimes at different chosen holes

(so you will have different breaking putts). Work your way around, rolling the ball into the hole. This will help you increase your confidence before making your way on to the course.



TEE PEGS Set Your Own Targets & Practice Distance Control

Place some tee pegs in a slight curve on a chosen part of the practice putting green at various distances. Here I am working on putt distances from around 3 - 12 yards.

The aim of this exercise is to simply roll golf balls as close as you can to the tee pegs you have randomly placed. This is another way to improve your judgement of pace and distance, just before you make your way to the 1st tee.